



Playbook

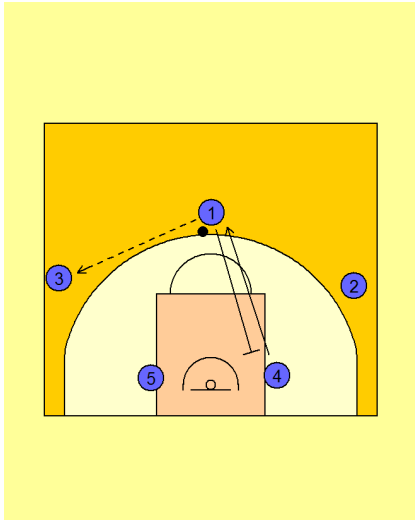
Contents

CAS

3 - Motion Offense

2

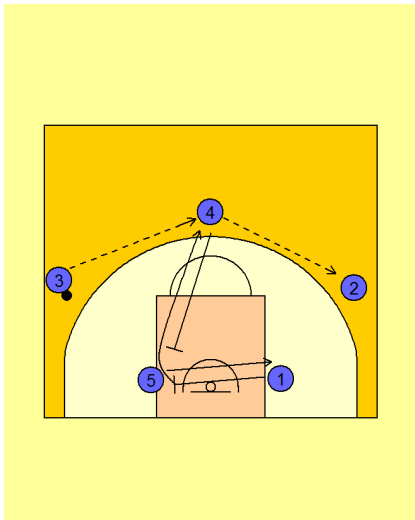
3 - Motion Offense



1 passes to the wing and screens down on the weakside Post player.

The weakside Post player pops out to the point

After the pass the Wing is looking for the Post feed or any other options that open up.



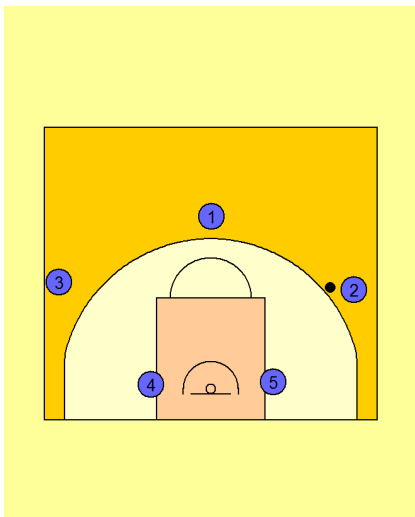
If there are no options then the wing swings the ball through the 4 player on the point to the opposite wing.

On the pass from the 4 to the wing, the 1 sets an away screen on the weakside post who flashes to the strong side post.

As the 1 sets off to screen the weakside Post the 4 will set a downscreen on the 1 (screen the screener). The 1 will then pop out to the Point.

Points of Emphasis:

- If the defensive tall on the 1 does not stay and help when the 1 sets the away screen then the wing should immediately look to drive.
- Look to feed the weakside Post coming off the screen.



We are now back in our 3 out 2 in offense.