



# Playbook

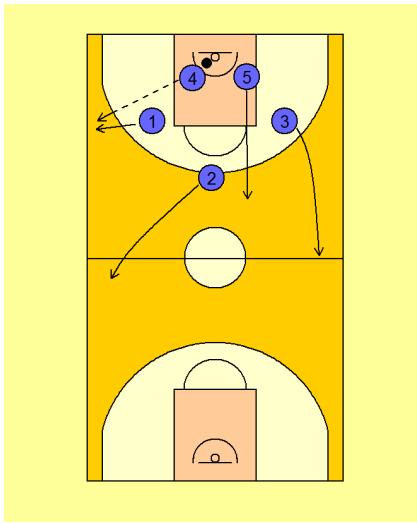
## Contents

### CAS

1 - Primary Transition Offense

2

**1 - Primary Transition Offense**



**Basic Concepts of Primary Offensive Transition**

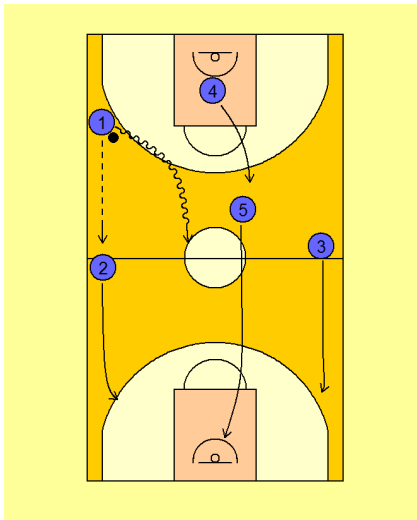
The rebounder looks to outlet to the strong side in the direction of the foul line extended.

The guard closest to the strong side foul line extended, needs to get to that position as soon as possible and call "outlet".

**Emphasis:** The outlet guard need to be parallel to the sideline, with their back against the sideline, they need to see the floor.

The guard on the weakside looks to run the weakside lane wide to the foul line extended at the other end of the court.

The other guard gets to the strong side lane deep for a quick pass from the 1. Getting the ball to this player is our primary option.



Our objective is to get the ball to the 2 (in this scenario) to attack the rim.

If this pass is not on then the guard looks to bring the ball up the middle lane and we move into our Secondary Transition offense.